

General Specifications

Model DVM, 3VM Model IM Three-Valve Manifolds

GS22B01C01-00E

The three-valve manifold is a device in which one equalizing valve and two stop valves are assembled together (one unit). The manifolds are available in either carbon steel or stainless steel and, when mounted differential pressure transmitters, form a compact unit. It is available for use with all Y/15, Y/13, Y/13H, Y/11DM, EJ110, EJ120, EJ130, EJX110, EJA110, and EJA120 Differential Pressure Transmitters.

MODEL DVM

STANDARD SPECIFICATIONS

Applicable Instruments: Refer to Table 1.

Valve Material: JIS S35C carbon steel valves or JIS SUSF 316 stainless steel valves.

Tubing Material: JIS SUS316TP.

Maximum Working Pressure: Refer to Table 1.

Maximum Operating Temperature: 120°C (250°F).

Process Connections: JIS Rc1/2 (PT1/2) or 1/2NPT female, whichever specified. For DVM-40B, used 1/2 inch pipe welded end.

Instrument Connections: JIS R1/2 (PT1/2) or 1/2NPT male, whichever specified.

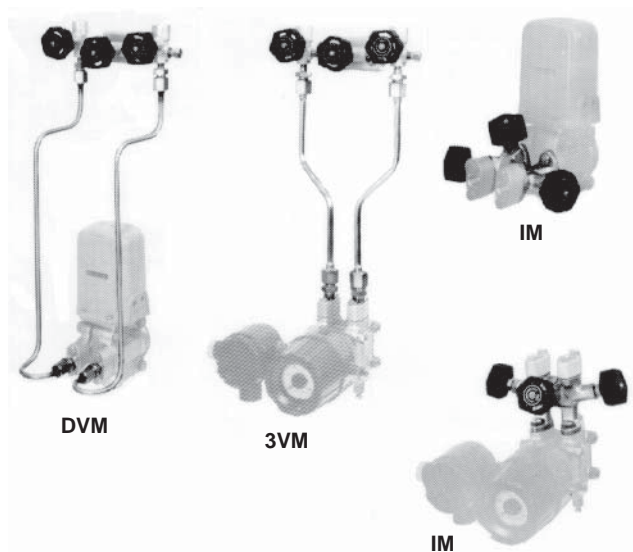
Direction of Process Connections: Vertical.

OPTIONS

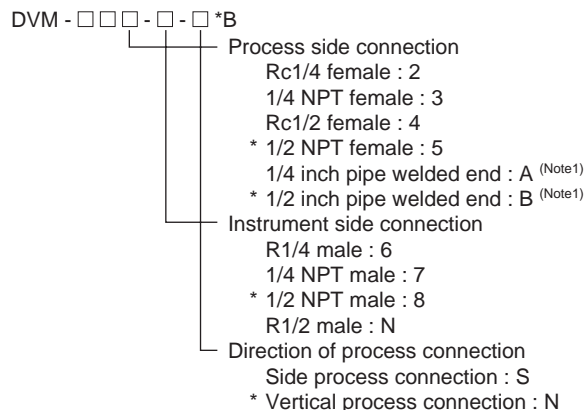
Degrease Cleansing Treatment for Oxygen Service

Preparation: Use SUSF316 stainless steel manifold.
Option code: /OSW.

Stainless Steel Tag Plate: Wired onto instrument.
Option Code: /TP-W.



Process side connection and Instrument side connection.



(Note1) Code B or A will be specified for Y/13HA.

* marks indicate the typical selection.

Table 1. Model DVM Suffix Codes and Specifications

Applicable Instrument	Model and Suffix Codes	Valve Material *1	Maximum Working Pressure
Y/15A	DVM-20 □-□-N *B	JIS SUSF316	14.7 MPa, 150 kgf/cm ² , 148 bar or 2130 psi
Y/13A	DVM-10 □-□-N *B	JIS SUSF316	
Y/13HA	DVM-40 B-N-N *B	JIS SUSF316	41.1 MPa, 420 kgf/cm ² , 412 bar or 5970 psi
Y/11DM	DVM-80 □-□-N *B	JIS SUSF316	14.7 MPa, 150 kgf/cm ² , 148 bar or 2130 psi

*1: Users must consider the characteristics of selected wetted parts material and the influence of process fluids. The use of inappropriate materials can result in the leakage of corrosive process fluids and cause injury to personnel and/or damage to plant facilities. It is also possible that the instrument itself can be damaged and that fragments from the instrument can contaminate the user's process fluids. Be very careful with highly corrosive process fluids such as hydrochloric acid, sulfuric acid, hydrogen sulfide, sodium hypochlorite, and high-temperature steam (150°C [302°F] or above). Contact Yokogawa for detailed information of the wetted parts material.

MODEL IM

STANDARD SPECIFICATIONS

Material: JIS S35C carbon steel or JIS SUSF316 stainless steel.

Maximum Working Pressure: 14.7 MPa, 150 kgf/cm², 148 bar or 2130 psi.

Maximum Operating Temperature: 150°C(300°F)

Process Connection: Refer to Table 2.

Instrument Connection: Refer to Table 2.

OPTIONS

Degrease Cleansing Treatment for Oxygen Service

Preparation: Use SUSF316 stainless steel manifold.
Option code: /OSW.

Stainless Steel Hardware: JIS SUS 630 cap screw for the Models IM-300.
Option code: /SSB.

Vent Plug: Available for IM-300 and IM-400.
Option code: /VNT.

Stainless Steel Tag Plate: Wired onto instrument.
Option Code: /TP-W.

Table 2. Model IM Suffix Codes and Specifications

Applicable Instrument	Model and Suffix Codes	Material *1	Available Directly Mounted to Instrument	Connection	
				Process	Instrument
Y/15A, Y/13A EJ110, EJ120, EJA110, EJA120 EJX110	IM-300*B	JIS SUSF316	Yes	Instrument process connector	Direct connection with bolts
	IM-400*B	JIS S35C			
	IM-100*B	JIS SUSF316	No	JIS Rc1/2 (PT1/2) female	

*1: ⚠ Users must consider the characteristics of selected wetted parts material and the influence of process fluids. The use of inappropriate materials can result in the leakage of corrosive process fluids and cause injury to personnel and/or damage to plant facilities. It is also possible that the instrument itself can be damaged and that fragments from the instrument can contaminate the user's process fluids. Be very careful with highly corrosive process fluids such as hydrochloric acid, sulfuric acid, hydrogen sulfide, sodium hypochlorite, and high-temperature steam (150°C [302°F] or above). Contact Yokogawa for detailed information of the wetted parts material.

MODEL 3VM

STANDARD SPECIFICATIONS

Valve Material: JIS S35C carbon steel valves or JIS SUSF316 stainless steel valves. (For tubing material, see Table 3 below.)

Maximum Working Pressure: Refer to Table 3.

Maximum Operating Temperature: 120°C (250°F).

Process Connections: JIS Rc1/2(PT1/2) or 1/2NPT female.
For 3VM-3S, used 1/2 inch pipe welded end.

Instrument Connections: JIS R1/2(PT1/2) or 1/2NPT male.

Direction of Process Connections: Vertical.

OPTIONS

Degrease Cleansing Treatment for Oxygen Service

Preparation: Use SUSF316 stainless steel manifold.
Option code: /OSW.

Vent Plug: Available for 3VM-1. Option Code: /VNT.

Stainless Steel Tag Plate: Wired onto instrument.
Option Code: /TP-W.

Process side connection and Instrument side connection.

3VM - □□ - □□ - □□ *B

Process side connection
Rc1/4 female : J1
Rc1/2 female : J2
1/4 NPT female : N1
* 1/2 NPT female : N2
1/4 inch pipe welded end : W1 (Note1)
* 1/2 inch pipe welded end : W2 (Note1)

Instrument side connection
R1/4 male : 1
R1/2 male : 2
1/4 NPT male : 3
* 1/2 NPT male : 4


Direction of process connection
Side process connection : S
* Vertical process connection : N

(Note1) Code W2 or W1 will be specified for EJ130.

* marks indicate the typical selection.

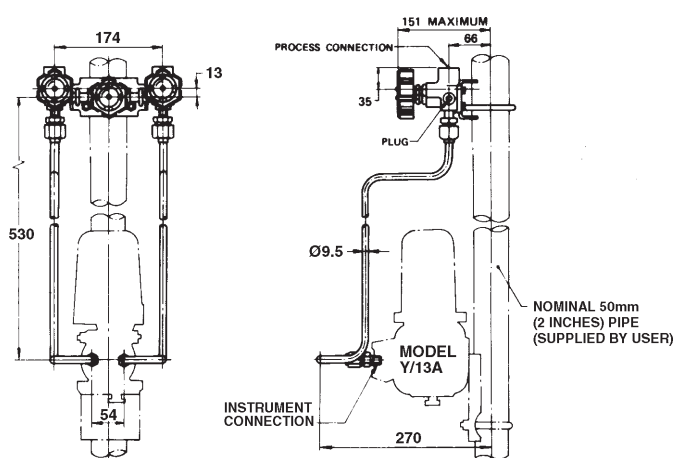
Table 3. Model 3VM Suffix Codes and Specifications

Applicable Instrument	Model and Suffix Codes	Material *1		Maximum Working Pressure
		Valve	Tubing	
EJ110, EJ120, EJA110, EJA120, EJX110	3VM-1S-N24-N*B	JIS SUSF316	JIS SUS 316TP	14.7 MPa {150 kgf/cm ² }
EJ130	3VM-3S-W22-N*B	JIS SUSF316	JIS SUS 316TP	41.1 MPa {420 kgf/cm ² }

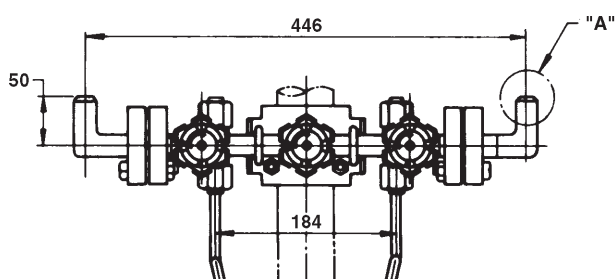
*1:  Users must consider the characteristics of selected wetted parts material and the influence of process fluids. The use of inappropriate materials can result in the leakage of corrosive process fluids and cause injury to personnel and/or damage to plant facilities. It is also possible that the instrument itself can be damaged and that fragments from the instrument can contaminate the user's process fluids. Be very careful with highly corrosive process fluids such as hydrochloric acid, sulfuric acid, hydrogen sulfide, sodium hypochlorite, and high-temperature steam (150°C [302°F] or above). Contact Yokogawa for detailed information of the wetted parts material.

DIMENSIONS

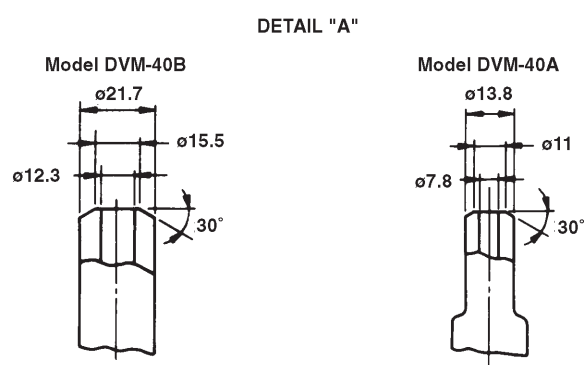
UNIT: mm

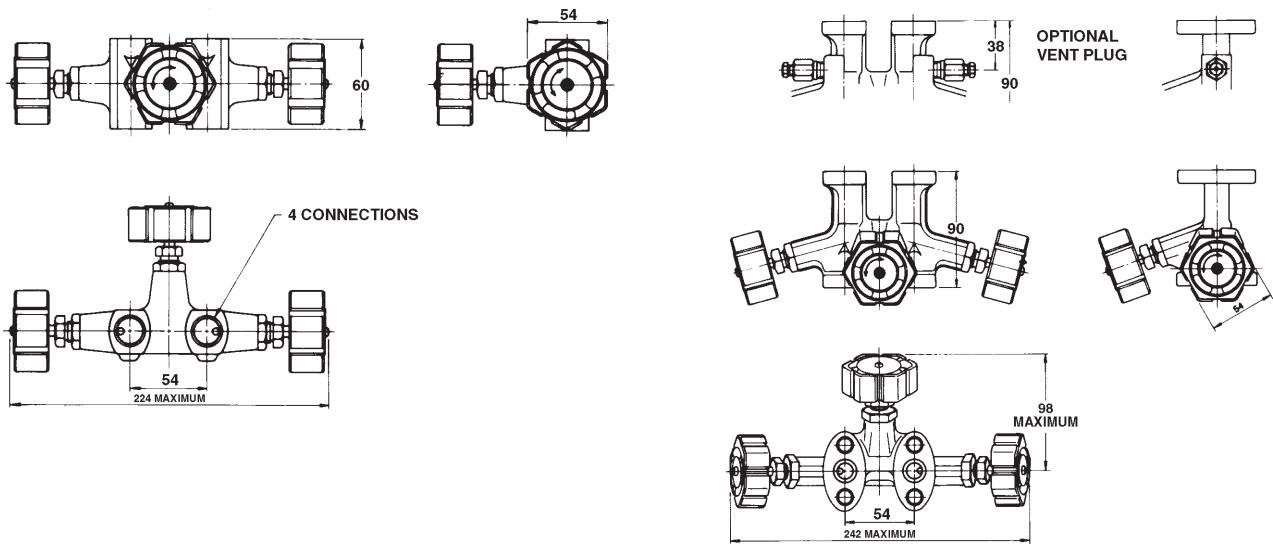


Model DVM-10□



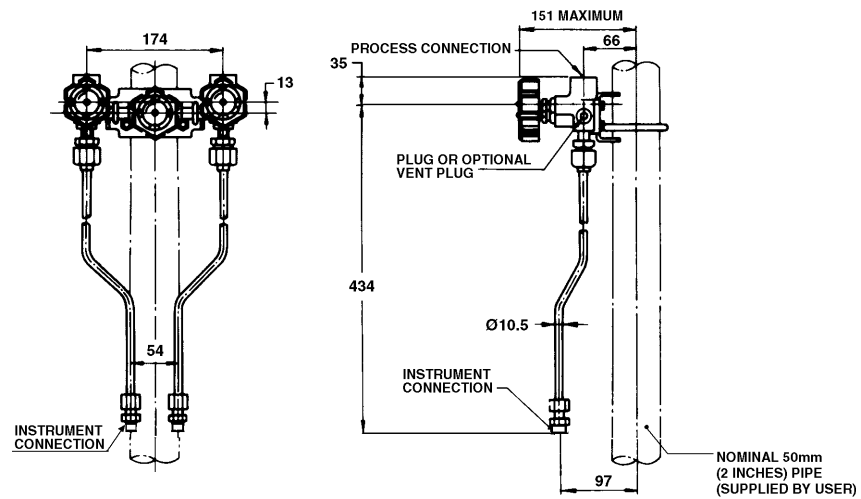
Model DVM-40B
Model 3VM-3S





Model IM-100

Models IM-300 and IM-400



Model 3VM-1□